



Bandon Downtown Streetscape

Dan Chandler, Dana Nichols & Andrea McMahon, City of Bandon

David Dougherty & Luzanne Smith, Landscape Architects, DLA

Kelly Sandow, Transportation Engineer, Sandow Engineering

Mike Hopper, Buildings Illustration Designer, Hopper Illustrations

Anna Backus, Civil Engineer, KPFF

Open House- August 22, 2023



Project Goals

ENHANCE THE PEDESTRIAN EXPERIENCE

- Safety
- Identity
- Walkable
- Furniture
- Lighting

CREATE ATTRACTIVE STREETS

- Well placed landscaping
- Street Art/ Sculpture

CREATE GATHERING PLACES

- Pedway & Pocket Parks
- Parklets & Outdoor Dining Opportunities

RECOMMEND PARKING IMPROVEMENTS

- Public and Private Parking Improvements



Existing Conditions

HISTORICAL CONNECTIONS



SIGNAGE & WAYFINDING



CLIMATE: STRONG NORTH WINDS



BUILDING LONGEVITY



VACANT LOTS IN THE DOWNTOWN CORE



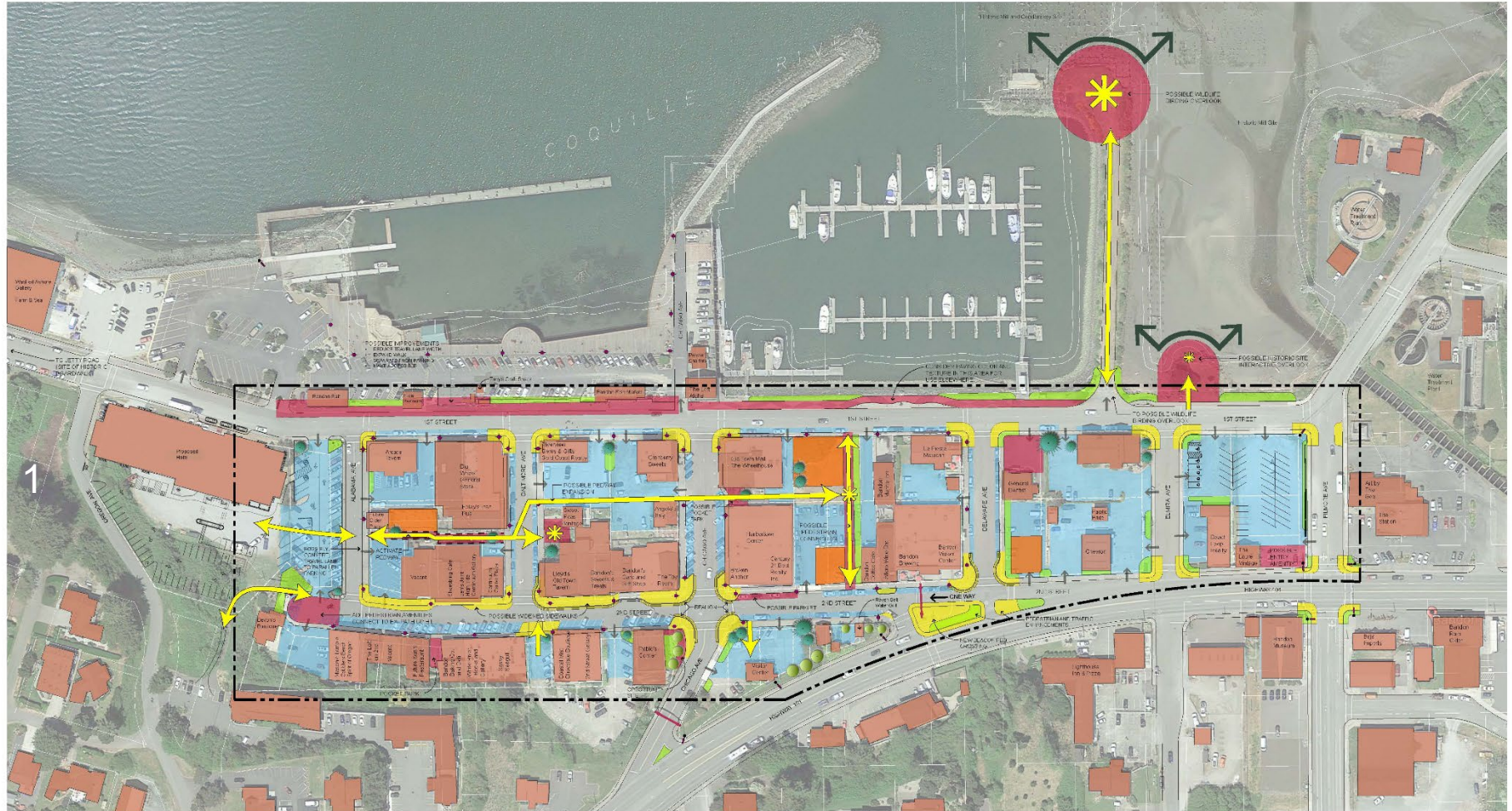
CIRCULATION AND PARKING



CITY OF BANDON EXISTING CONDITIONS

August 22nd, 2023

Overall Opportunities Plan

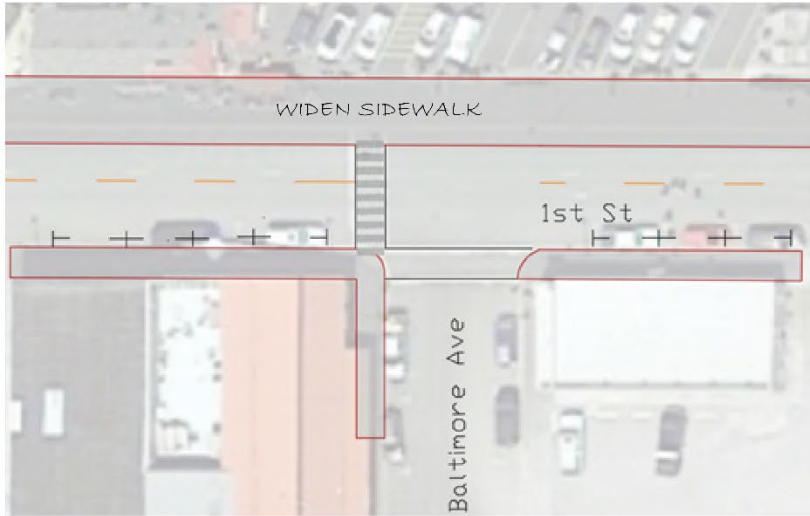


LEGEND

EXISTING PARKING	KEY OPPORTUNITY SITES • POCKET PARKS • PEDESTRIAN ENHANCEMENTS	EXISTING ALLEYS	PEDESTRIAN CONNECTIONS	EXISTING CONIFER TREES	EXISTING ORNAMENTAL STREETLIGHT	FUTURE BUILDING INFILL
EXISTING BUILDINGS	LANDSCAPE IMPROVEMENT OPPORTUNITY AREAS	EXISTING DRIVEWAYS	PEDESTRIAN IMPROVEMENTS • SAFER STREET CROSSINGS • LANDSCAPING • FURNISHINGS • WIDER SIDEWALKS • PAVING IMPROVEMENTS	EXISTING DECIDUOUS TREES	EXISTING OVERHEAD STREETLIGHT	PROJECT WORK SCOPE
					FEATURED OPPORTUNITIES	

1st Street Reconfiguration

1ST STREET OPTION BETWEEN BALTIMORE AND CHICAGO AVE.



1ST STREET WIDTHS NARROWED TO 11 FEET, AND THE SIDEWALK TO THE NORTH WIDENED TO THE SOUTH.



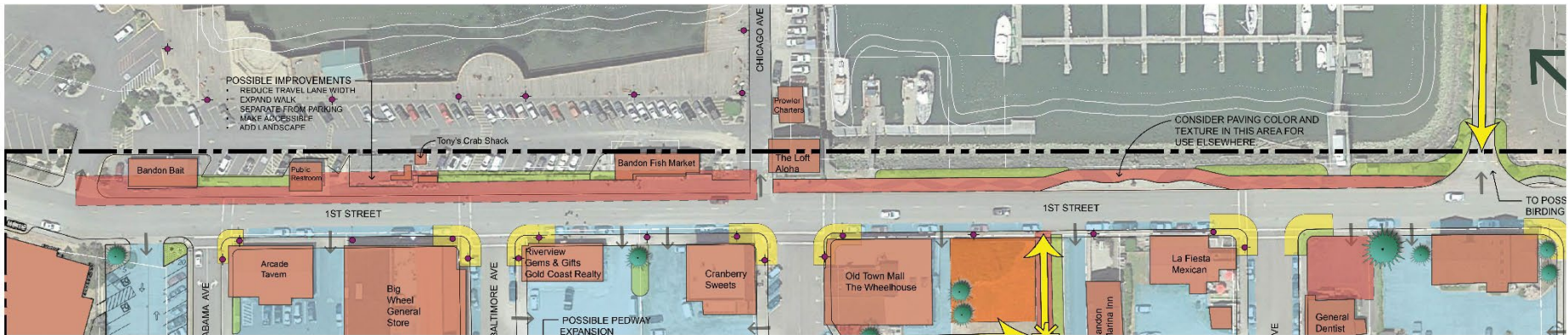
EXISTING WATERFRONT IMAGES



USING ART TO DELINEATE USES



ADD BIKE LANES (SHARROWS) & PARKING



CITY OF BANDON 1ST STREET RECONFIGURATION OPTION

August 22nd, 2023



474 Willamette Street
Suite 305
Eugene, Oregon 97401
P 541.683.5803
F 541.683.8183
www.DLAdesign.com

2nd Street Reconfiguration

OPTIONS BETWEEN CHICAGO & DELAWARE AVE



OPTION 1: PROVIDE ANGLED PARKING ALONG THE NORTH SIDE OF 2ND, ONE 11-FOOT TRAVEL LANE, AND PARALLEL PARKING ON THE SOUTH SIDE.



OPTION 2: PROVIDE ANGLED PARKING ON THE SOUTH SIDE, ONE 11-FOOT TRAVEL LANE, AND PARALLEL PARKING ON THE NORTH SIDE.

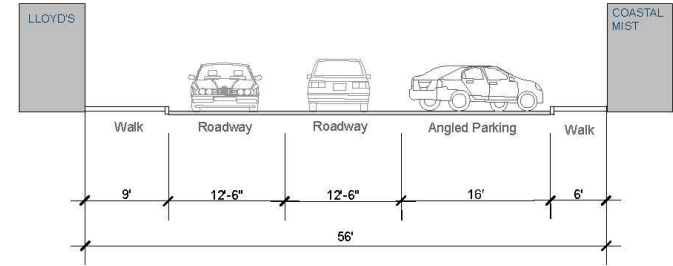


OPTION 3: PARALLEL PARKING ON THE NORTH AND SOUTH SIDES OF 2ND, ONE 11-FOOT TRAVEL LANE, AND WIDENING THE SIDEWALK ON THE NORTH SIDE.

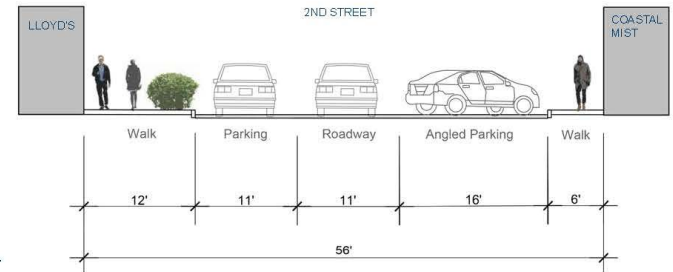
OPTION BETWEEN ALABAMA & CHICAGO AVE



EXISTING SECTION



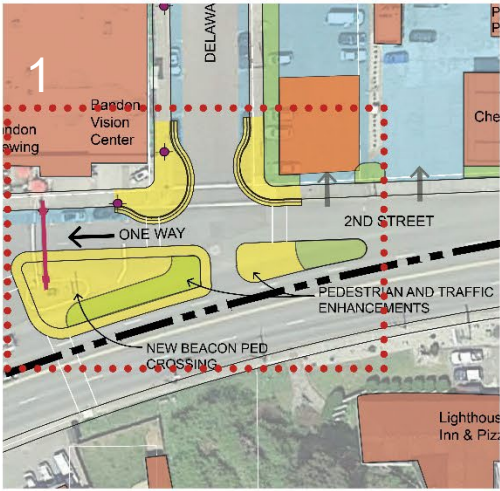
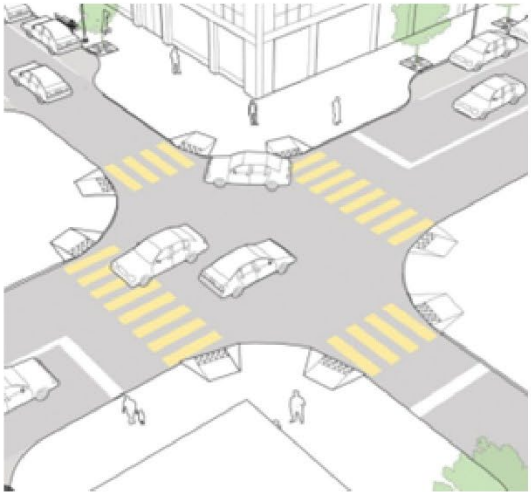
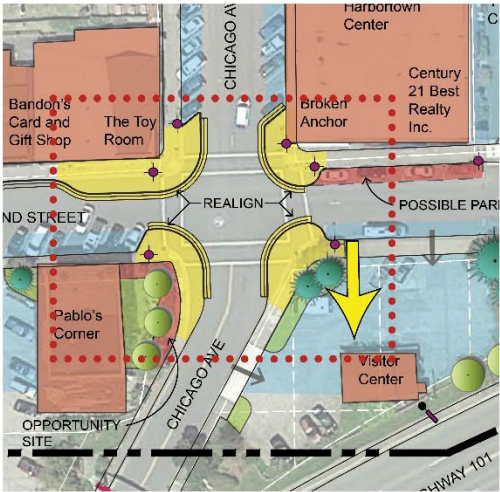
POSSIBLE IMPROVEMENT



EXAMPLES OF WIDENED SIDEWALKS



Pedestrian Safety Enhancements



CITY OF BANDON
PEDESTRIAN SAFETY ENHANCEMENT

August 22nd, 2023



Downtown Connections

1. FUTURE CIDER TASTING ROOM



2. EXISTING PEDWAY



3. CONNECTION BETWEEN BALTIMORE & CHICAGO



4. POCKET PARK OPPORTUNITY



5. PEDESTRIAN CONNECTION



OUTDOOR DINING (IMAGES SOURCED FROM DIRTWORKS.ORG)

ACTIVATING ALLEYS (IMAGES SOURCED FROM TEAM BETTER BLOCK)



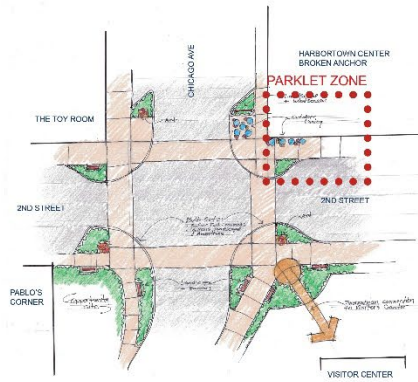
CITY OF BANDON
EXTENDING THE PEDWAY

August 22nd, 2023



474 Willamette Street
Suite 305
Eugene, Oregon 97401
P 541.683.5803
F 541.683.8183
www.DLAdesign.com

Gathering Opportunities



PARKLETS ACTIVATE THE STREETScape AND PROVIDE OUTDOOR SEATING DURING THE SUMMER



BEFORE



AFTER



INTERIOR COURTYARD DINING EXAMPLES (IMAGES SOURCED FROM STUDIO-111.COM)



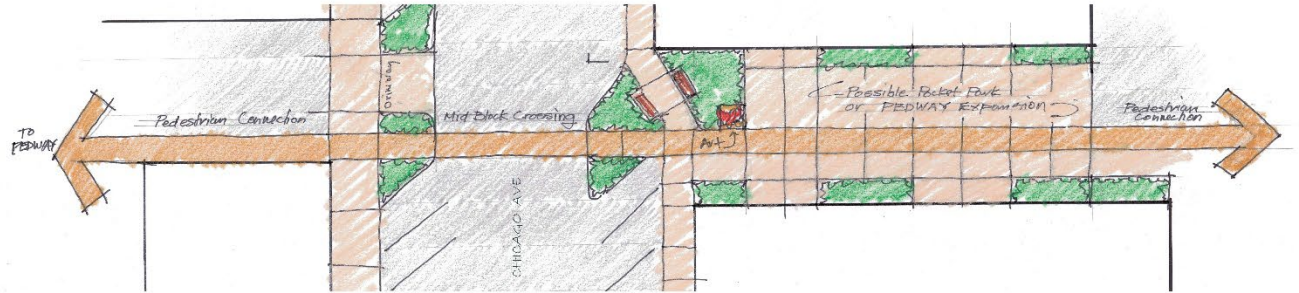
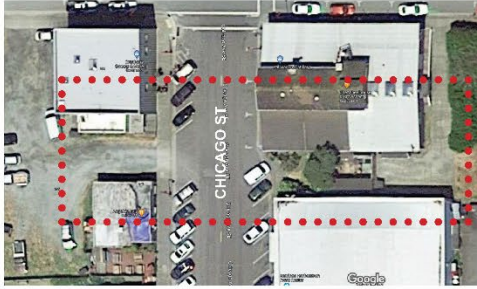
CITY OF BANDON PARKLET & OUTDOOR DINING OPPORTUNITIES

August 22nd, 2023



474 Willamette Street
Suite 305
Eugene, Oregon 97401
P 541.683.5803
F 541.683.8183
www.DLAdesign.com

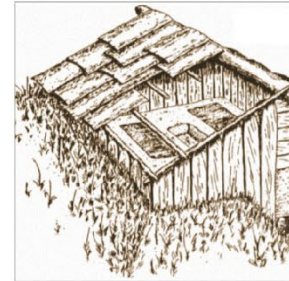
Interpretative Opportunities



LOCATION OF CHICAGO STREET PEDESTRIAN CONNECTION AND POSSIBLE OPPORTUNITY FOR A POCKET PARK / EXTENDED PEDWAY



**SAE-TSIK-NA
(TUPPER ROCK),
MOST SACRED SITE
IN NA-SO-MAH AREA
BY HAMMERING ON
"GRANDMOTHER" ROCK,
THE OCEAN COULD BE
CALMED.**



INCORPORATING THE HISTORY OF THE COQUILLE INDIAN TRIBE (IMAGES SOURCED FROM WWW.COQUILLETRIBE.ORG AND THE BANDON MUSEUM)



AN EXAMPLE FORM NEW ZEALAND OF INTEGRATING THE HISTORY OF KAITAIA THROUGH IMAGES, MURALS AND INTERPRETIVE NARRATIVES (IMAGES SOURCED FROM NEW ZEALAND HERALD)



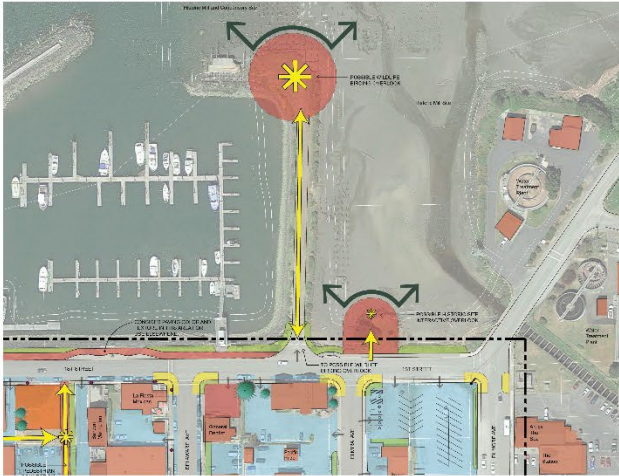
CITY OF BANDON INTERPRETATIVE OPPORTUNITIES

August 22nd, 2023



474 Willamette Street
Suite 305
Eugene, Oregon 97401
P 541.683.5803
F 541.683.8183
www.DLAdesign.com

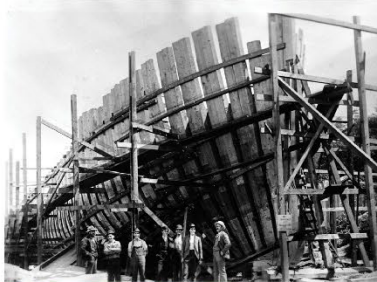
Viewing Opportunities



NATURE VIEWING AREA (IMAGES SOURCED FROM DIRTWORKS.US)



MOORE LUMBER MILL



HEUCKENDORF SHIP BUILDERS



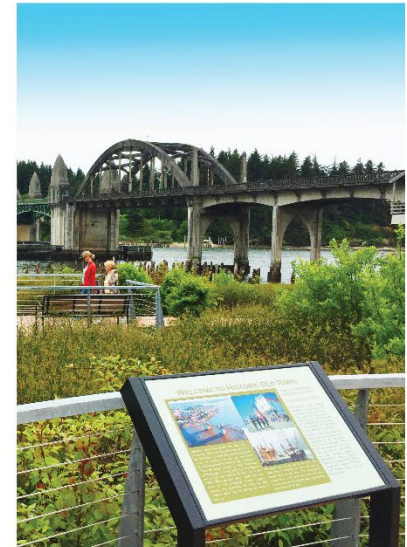
COQUILLE VALLEY CO-OP



BANDON WOOLEN MILLS



HISTORICAL VIEWING AREA



CITY OF BANDON VIEWING & INTERPRETATIVE OPPORTUNITIES

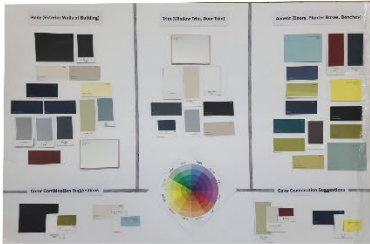
August 22nd, 2023



474 Willamette Street
Suite 305
Eugene, Oregon 97401
P 541.683.5803
F 541.683.8183
www.DLAdesign.com

Building Opportunities

SERIES 1: SUBDUED PALETTE WITH ACCENT COLORS



SERIES 2: BRIGHTER COLOR BODY WITH SIMILAR ACCENTS



EXAMPLES OF STRONG CORNERS



EXISTING CORNERS



CITY OF BANDON POSSIBLE BUILDING UPGRADES

August 22nd, 2023



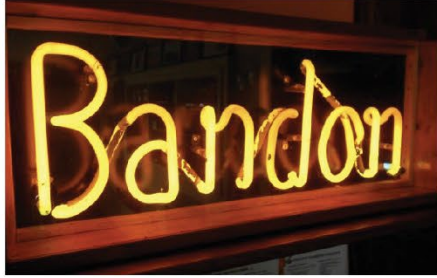
474 Willamette Street
Suite 305
Eugene, Oregon 97401
P 541.683.5803
F 541.683.8183
www.DLAdesign.com

Lighting, Wayfinding & Signage

BUILDING & STREET LIGHTING



EXISTING STREET LIGHT



BUILDING SIGNAGE LIGHTING EXAMPLES



ARTISTIC LIGHTING



BOLLARD STREET LIGHTING

WAYFINDING SIGNAGE



WAYFINDING THROUGH SIDEWALK SIGNAGE

BUILDING SIGNAGE



HISTORICAL SIGNAGE



BUILDING SIGNAGE



CITY OF BANDON LIGHTING, WAYFINDING & SIGNAGE

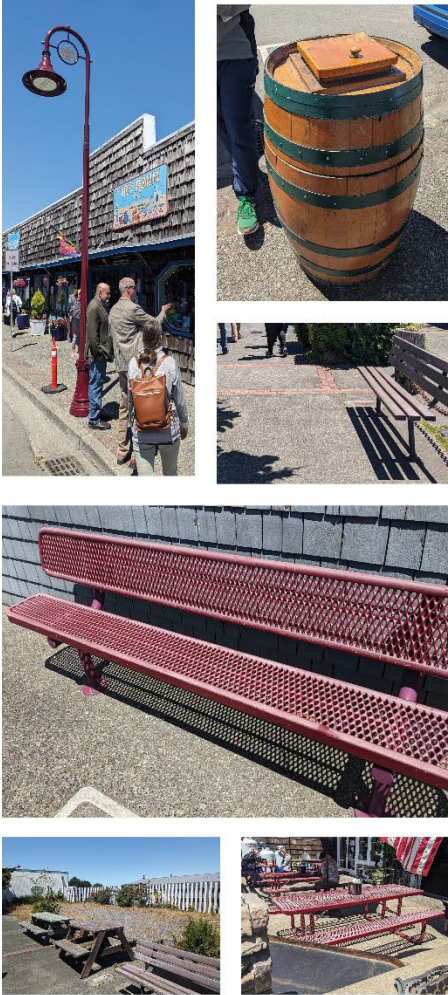
August 22nd, 2023



474 Willamette Street
Suite 305
Eugene, Oregon 97401
P 541.683.5803
F 541.683.8183
www.DLAdesign.com

Site Furniture

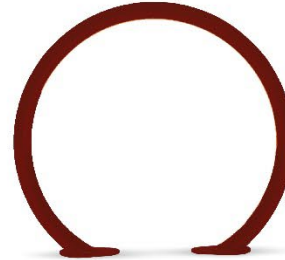
EXISTING STREETScape AMENITIES



SERIES 1



SERIES 2



SERIES 3



CITY OF BANDON POSSIBLE SITE FURNITURE AMENITIES

August 22nd, 2023



474 Willamette Street
Suite 305
Eugene, Oregon 97401
P 541.683.5803
F 541.683.8183
www.DLAdesign.com

Enjoy the Open House

