



PREPARED BY THE OFFICE OF H.G. CHICKERING JR.,
CONSULTING PHOTOGRAMMETRIST INC.
EUGENE, OREGON

MAP CONTROL FURNISHED BY
HARLAN, GESSFORD & ERICHSEN
COOS BAY, OREGON

REV.	BY	DESCRIPTION	DATE

COMPILED FROM AERIAL
PHOTOGRAPHY DATED
JANUARY 4, 1973

DASHED CONTOURS MAY INDICATE LESS THAN
STANDARD ACCURACY DUE TO DENSE
GROUND COVER AND HEAVY SHADOWS

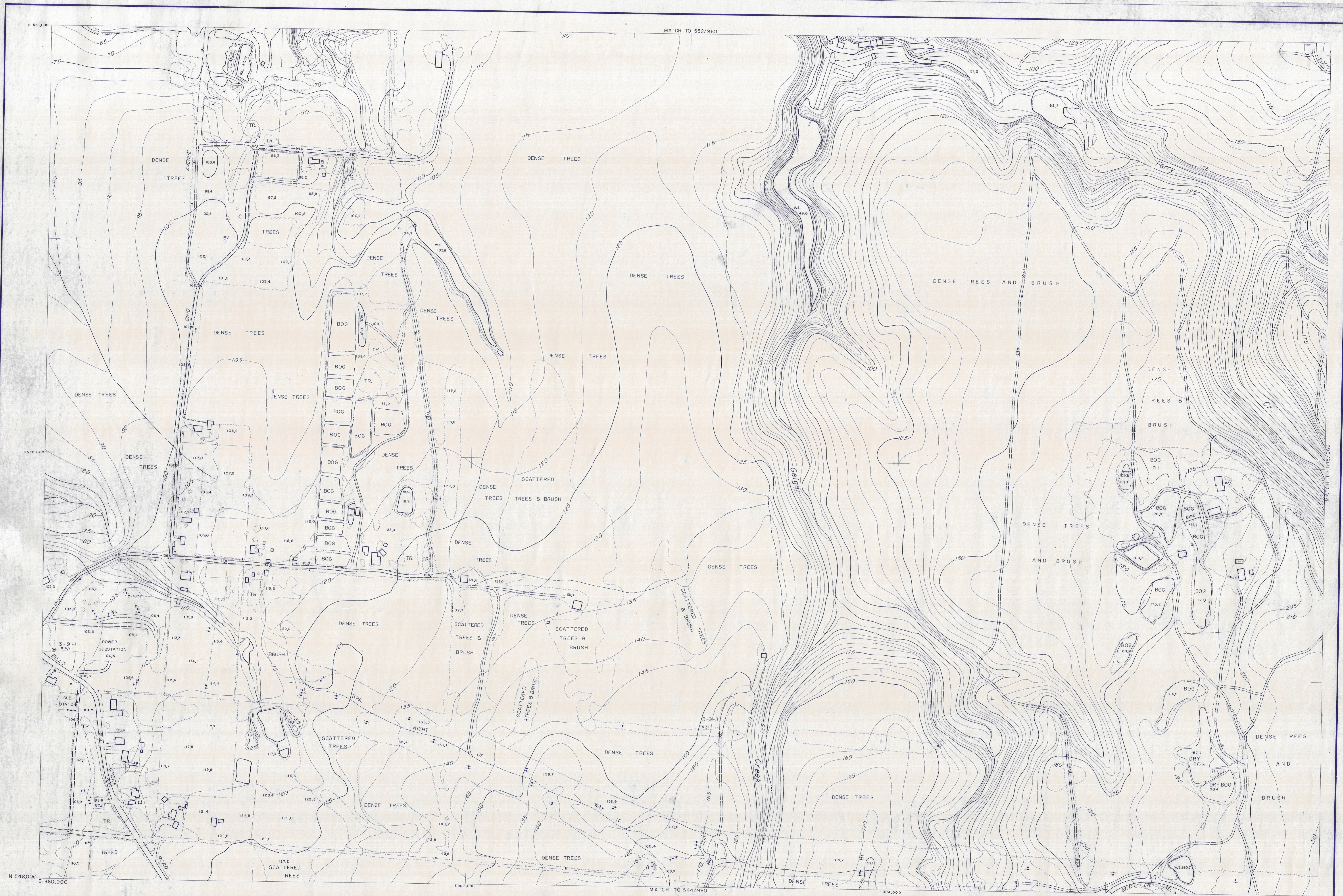
SCALE 1"=200'
CONTOUR INTERVAL 5'

USC & GS DATUM 1947 ADJUSTMENT
GRID BASED ON LAMBERT PROJECTION
OREGON SOUTH ZONE

CITY OF BANDON
PUBLIC WORKS DEPARTMENT
BANDON, OREGON

SHEET NO.
552/960

FLAT FILE NO.



PREPARED BY THE OFFICE OF H.G. CHICKERING JR.,
CONSULTING PHOTOGRAMMETRIST INC.
EUGENE, OREGON

MAP CONTROL FURNISHED BY
HARLAN, GESSFORD & ERICHSEN
COOS BAY, OREGON

REV.	BY	DESCRIPTION	DATE

COMPILED FROM AERIAL
PHOTOGRAPHY DATED
JANUARY 4, 1973

DASHED CONTOURS MAY INDICATE LESS THAN
STANDARD ACCURACY DUE TO DENSE
GROUND COVER AND HEAVY SHADOWS

SCALE 1"=200'
CONTOUR INTERVAL 5'

USC & GS DATUM 1947 ADJUSTMENT
GRID BASED ON LAMBERT PROJECTION
OREGON SOUTH ZONE

CITY OF BANDON
PUBLIC WORKS DEPARTMENT
BANDON, OREGON

SHEET NO.
548/960

FLAT FILE NO.